

AN EXPLORATORY STUDY ABOUT KNITTED GARMENTS SUCH AS WOMEN'S SWEATSHIRT, MEN'S HOODED T- SHIRT, MEN'S ROUND NECK T-SHIRT, MEN'S SPORTS T- SHIRT

Mr. P. Sankara Karthikeyan¹, Melvin.P², Subramani.M³, Dharaneesh.RS⁴, Pandi.A⁵

¹Assistant Professor, Nift – Tea College of Knitwear Fashion, India.

^{2,3,4,5}Final Year Students, Nift – Tea College of Knitwear Fashion, India.

DOI: <https://www.doi.org/10.58257/IJPREMS44304>

ABSTRACT

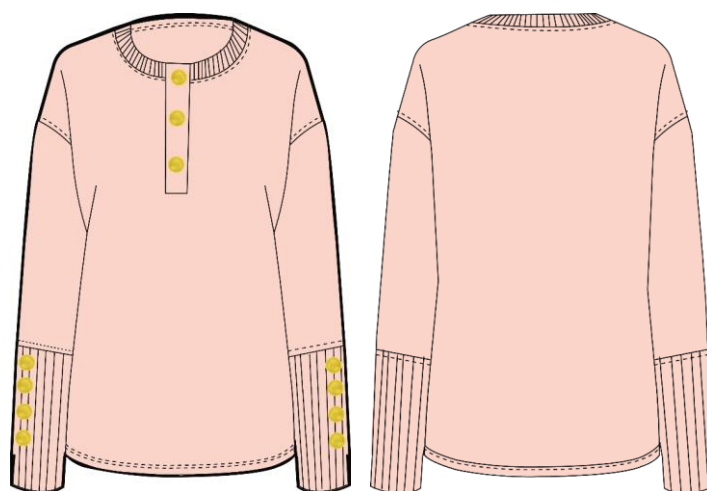
The garment sector contributes about 14% to industrial production, 4% to the gross domestic product (GDP), and 27% to the country's foreign exchange inflows. This sector provides direct employment to over 45 million people. The textiles sector is the second largest provider of employment after agriculture. Garment manufacturing plays a very vital role in Indian economy including foreign exchange. Knitted fabrics are very much suitable for casual garments as well as formals now a days. This article depicts the study about the different styles of the garments, which is prevailing in the market. The students of merchandising department done their export sampling project in variety of garments especially in knitted garments. In this article, they highlights the fashion garments through knitted fabrics in variety of styles like Women's Sweatshirt, Men's Hooded T- shirt, Men's Round Neck T-shirt, Men's Sports T- shirt

Keywords: Women's Sweat Shirt, Men's Hooded T- Shirt, Men's Round Neck T-Shirt, Men's Sports T- Shirt.

1. INTRODUCTION

Women's Sweat shirt

Crafted for young women, this sweatshirt features a soft pale peach hue (matching Pantone 12-0915 TPX) and is cut from 100 % cotton loop-knit fabric of 230 g/m² after finishing. The fabric construction uses a two-thread loop knit, combining 30s and 25s yarns, which initially yielded 190 g/m² in grey before cold-brand dyeing and finishing. The design presents a casual yet stylish silhouette—with a round neckline, long sleeves accented by extended cuffs with decorative buttons, and an attached placket—inviting both aesthetic appeal and functional detailing. To enrich hand-feel and durability, a silicon-wash finishing was applied, ensuring the garment is comfortable, year-round appropriate, and structurally sound. Produced using standard cutting and sewing machinery, this piece is well suited for small- to medium-scaled manufacturing. Offered in sizes S, M and L, the sweatshirt exemplifies how deliberate fabric choices, finishing techniques and production methods can come together to deliver a modern, versatile wardrobe staple for women.



Men's Hooded T- shirt

This study aims to contribute to the analysis of the evolution of sample-garment manufacturing, emphasising how the sampling stage serves as the foundational pillar in the apparel industry. At this stage, manufacturers gather crucial information on cost, timing, labour, and production workflows, while also gaining invaluable market insights beyond the purely technical aspects of garment manufacturing. By interrogating this early phase of production, businesses are better equipped to refine fabric choices, construction methods, and styling before scaling up to full-volume manufacture.

In the context of this investigation, we present a casual summer hoodie for young men crafted from a 2-thread loop-knit fabric in navy blue and weighing 240 g/m², designed to strike an appropriate balance of comfort, durability and breathability. The design features short sleeves and a drop-shoulder silhouette for a relaxed fit, a hood with a short zipper placket and clean centre seam, a straight hem with double top-stitching for longevity, and subtle branding at the sleeve and care label at the hem for practical refinement. Together, these details underscore how sampling allows for iterative refinement of a garment's aesthetic, fit and functional attributes, ensuring that when the product enters bulk production it aligns precisely with both technical specifications and market expectations.



Men's Round Neck T-shirt

This design presents a contemporary men's round-neck T-shirt meticulously crafted to merge comfort, functionality and modern street wear aesthetics. Constructed from 100 % premium cotton fabric with a fabric weight of 260 GSM, the garment delivers a robust yet soft hand feel, offering substantial structure while maintaining breathability — ideal for everyday wear across multiple seasons. The use of 260 GSM cotton fleece ensures the tee exhibits excellent durability, natural moisture absorbency and a refined finish that supports both casual and semi-active lifestyle segments, aligning with industry standards where heavier GSM fabrics in street wear are often prized for premium feel.

The silhouette adopts a relaxed, boxy cut with dropped shoulders and slightly extended sleeves, reflecting current urban trends in men's fashion. A rib-knit round neckline provides shape retention and clean finish, while the standout feature lies in the two asymmetrical utility-style patch pockets in contrasting black on the front panel. These pockets serve not just a functional role but also introduce tactical visual layering, as one overlaps the brand-inspired "DARK" text printed in a sharp modern serif typeface. Together, these details elevate the design beyond a basic tee into a versatile street wear piece that balances graphic impact, tailored fit and fabric integrity — demonstrating how thoughtful design, material choice and finishing converge to meet the demands of modern men's casual wear.



Men's Sports T- shirt

This men's sports T-shirt is tailored for young men who seek both performance and style. Crafted from a premium blend of 49% bamboo, 46% cotton and 5% Lycra, the fabric weighs in at 180 GSM—offering the ideal fusion of lightness, strength and breathability for year-round wear. The bamboo component delivers a luxuriously smooth feel

and natural antibacterial and moisture-wicking qualities, keeping the skin cool and dry even during active use. Meanwhile the cotton ensures durability and excellent airflow, and the Lycra provides stretch and shape retention so the garment moves with the wearer and retains its fit through repeated wear and washes. Visually and technically, the design is equally thoughtful: a regular fit with a polo-inspired neckline and buttoned placket gives a sporty yet polished look, while the ergonomic cut allows full freedom of movement without sacrificing structure. Finished in a light-grey tone (easily adaptable to alternative colours), the piece features a clean minimal logo on the back panel, straight hem and double-top stitching to reinforce durability and finish. The combination of performance fabric blend, thoughtful styling and manufacturing details makes this T-shirt a versatile staple — equally suitable for athletic settings, casual layering or warm-weather daily wear.



2. CONCLUSION

Due to the enormous demand for knitted products, lot of job opportunities available in this sector. One who is able to identify the customer requirement and fulfill it with attractive designs they will successful in the business.

3. REFERENCES

- [1] Spencer D J (1989). Knitting technology Pergamon
- [2] "Crew neck". Merriam-Webster Online. Retrieved 2 August 2010.
- [3] The Most Famous Statement T-shirts by SoJones Asmara, September 10, 2009
- [4] Flanagan, Mike (November 18, 2012). "The Flanarant: China's textile and clothing challenge in new era". just-style. Retrieved December 10, 2012
- [5] Mitnick, Sarai (2011). The Colette Sewing Handbook. Cincinnati, Ohio: Krause Publications. pp. 48–49
- [6] Carefree Clothes for Girls: 20 Patterns for Outdoor Frocks, Playdate Dresses, and More—book by Junko Okawa (Shambhala Publications, 2009)